

PART OF N.E. 1/4 SEC. 23, T.5N., R.1W., S.L.B. & M.
WOODLAND HILLS SUBDIVISION NO. 1

LOTS 7-13
IN WEBER COUNTY
SCALE 1" = 60'

TAXING UNIT: 159

SOUTH 759.31' &
EAST 559.31' FR.
N. 1/4 COR.

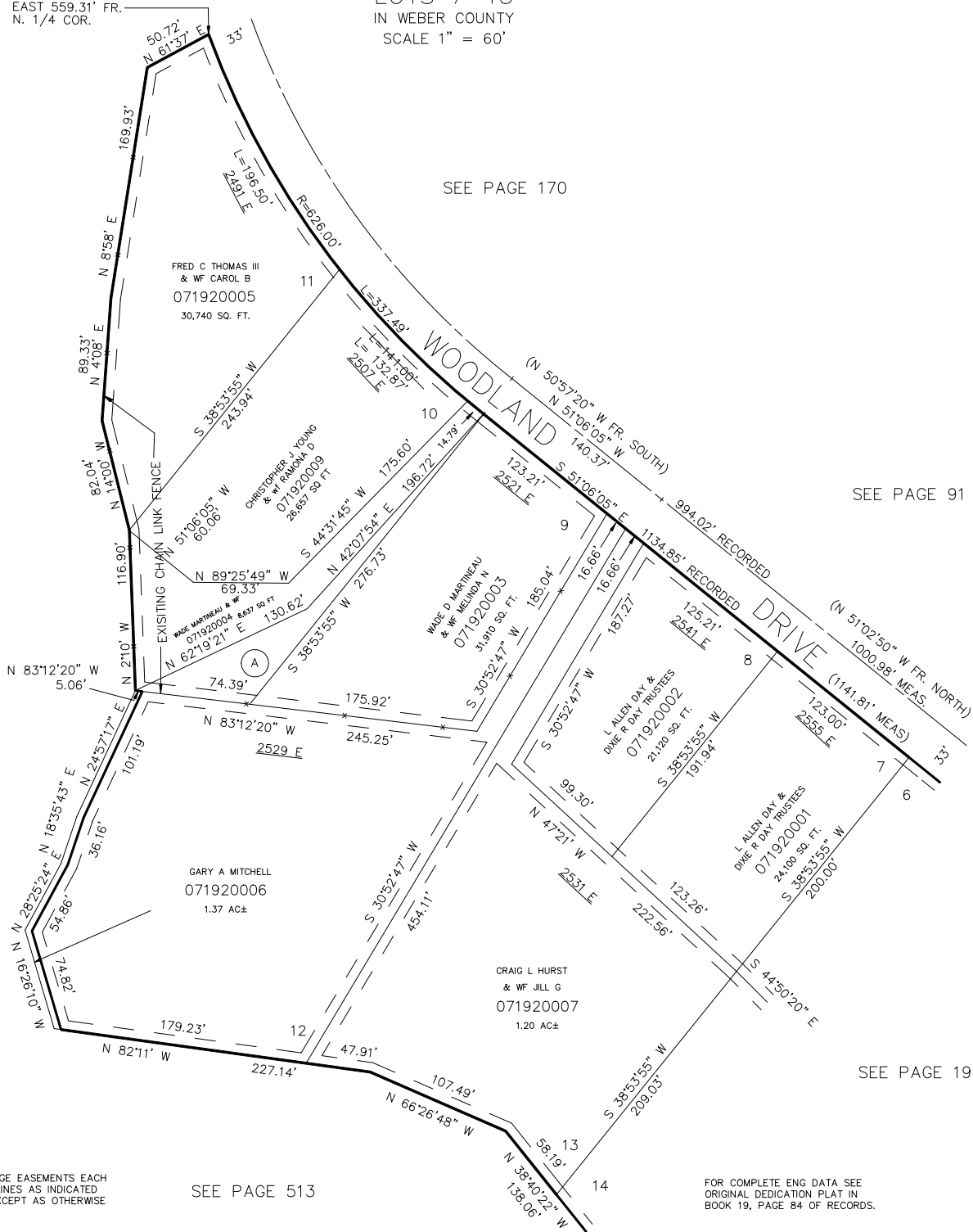
SEE PAGE 170

SEE PAGE 91

SEE PAGE 191

SEE PAGE 513

(A)
WADE MARTINEAU
071920008
4285 SQ. FT.



7' UTILITY & DRAINAGE EASEMENTS EACH
SIDE OF PROPERTY LINES AS INDICATED
BY DASHED LINES EXCEPT AS OTHERWISE
SHOWN.

SEE PAGE 513

FOR COMPLETE ENG DATA SEE
ORIGINAL DEDICATION PLAT IN
BOOK 19, PAGE 84 OF RECORDS.